



The Smallholding Centre

1 Cawdor Terrace ☎ 01239 621 303

Newcastle Emlyn ✉ info@thesmallholdingcentre.co.uk
SA38 9AS

8 Bed Manor House Conversion

£495,000



Castle House, Castell Malgwyn, Llechryd Cardigan, SA43 2QA

A very rare opportunity to buy a substantial part of an historic Grade 2 Listed Manor House set in around 5 acres of superb grounds (part of which will be communal gardens for the four properties onsite) overlooking the beautiful River Teifi on one of its loveliest stretches. Conditional Listed Building Consent (Ref ; 22/0964/LB) was achieved in May 23 (see details attached) to subdivide the House into 4 units. One of the 4 units is being retained by the vendors, another has now been sold with two others currently available. This listing is to be called Castle House and is the larger of the two available (see the other listing for the smaller property for £295,000 called Hammet House).

Castle House has 8 bedrooms with 6 en-suite bathrooms and is on three floors which includes a 2 bed self contained flat on the top floor. The first and second floors are in good condition whilst the ground floor will need some remedial works to accommodate the various alterations as required by the subdivision and the Listed Building Consent. This property will have its own gardens as well as right of access to the extensive landscaped communal gardens surrounding the House. A management company has been set up to handle the affairs of the 4 properties involved.

Key Features

Major Part Of 18th C Manor House

Located On Three Floors

Some Reconfiguration Works Req

Private And Communal Gardens

Management Company In Place

Grand Country Living At Its Best

8 + Bedrooms / 6 Bathrooms

Energy Rating : Exempt (Listed Building)

Enjoy owning and living in part of an historic Country House situated a short drive to the coast and located in a beautiful setting.

Ground Floor

Castle House - As can be seen from the pictures on Castle House the majority of the ground floor and none of the first floor need work at all, however the second floor could use a refresh to bring it back up to current standards. Parts of the ground floor would need work done to make a nicer main entrance for Castle House and to install a kitchen and to do various other alterations as required by the planning consents. As well as private gardens (marked in green on the attached map) the new owners of Castle House would also enjoy full use of the large communal Manor House gardens. In addition to the Listed Building Consent the standard Planning Consents have also recently been obtained in circa June 2023.

History of the House - The present house was constructed c.1795 for Sir Benjamin Hammet, a wealthy entrepreneur from Taunton, Somerset, who bought the estate in 1791. It is built in three storeys of local Cilgerran stone with a hipped slate roof, a five-bay frontage and a two-storey wing. It replaced a previous house and was originally named Castle Malgwyn.

Hammet, who founded and co-owned the bank of Esdaile, Hammet & Co. was elected MP for his home town of Taunton in 1782.

After Hammet's death in 1802 the estate passed to his son, John. On John's early death in 1811 the house contents were sold. When Sir Benjamin's wife Lady Louisa died in 1824 the estate was sold to Abel Anthony Gower of Glandovan, who let the property. On Gower's death in 1837 his nephew, Abel Lewes Gower, inherited and moved in, investing a large amount of money on improving the property. When he also died young in 1849 his widow remained in residence until her own death in 1886, when it passed to Abel Lewes's brother, Robert Frederick Gower, who had also inherited Glandovan from their father. Castell Malgwyn passed down in the Gower family until it was sold in 1948, and became a hotel in 1962.

The house was renamed Hammet House in 2012 in recognition of the original owner. Further extensive history of the house over several hundred years can be found here at <http://www.glen-johnson.co.uk/castellmalgwyn-mansion-hammett-house/>

Listed Building Conditions - There are various Listed Building Conditions that apply to this property - please ask for details when arranging a viewing.

General Information - Viewings: Strictly by appointment via the agents, Houses For Sale in Wales or our sister company, The Smallholding Centre.

Tenure: Each of the four units will own a share in the management company that will own the freehold.

Services: Castle House will have its own mains electric supply, mains water and a communally shared private drainage arrangement.

Council Tax Band: Tbc, Ceredigion County Council

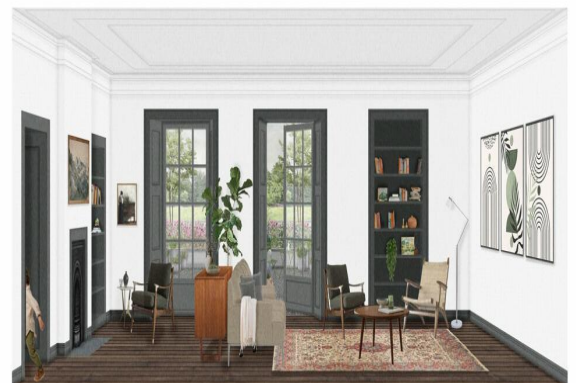
Directions - From Newcastle Emlyn, proceed on the A484 to Llechryd. Take the left turn over the river bridge and the entrance to Castell Malgwyn is immediately on the right-hand side. Proceed down the drive



Dining Room / Study

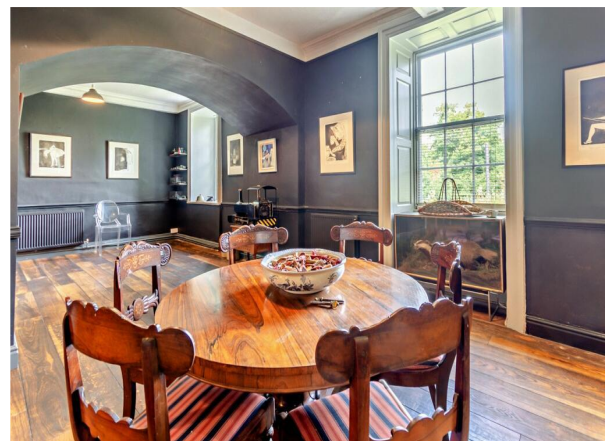


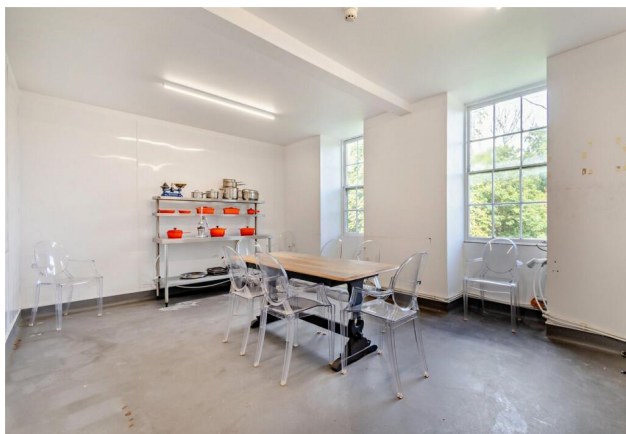
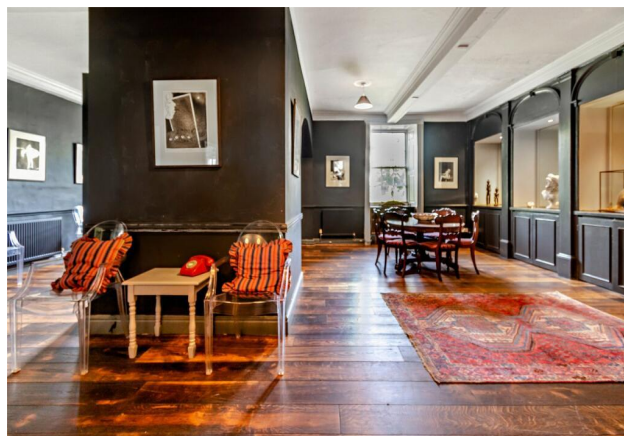
Castle House - North Westerly View



Artist's Impression

and past the entrance to the courtyard cottages on the right. Proceed and then take the next right hand fork which goes down beside Castell Malgwyn and continue down to the parking area for Castle House & Hammet House.

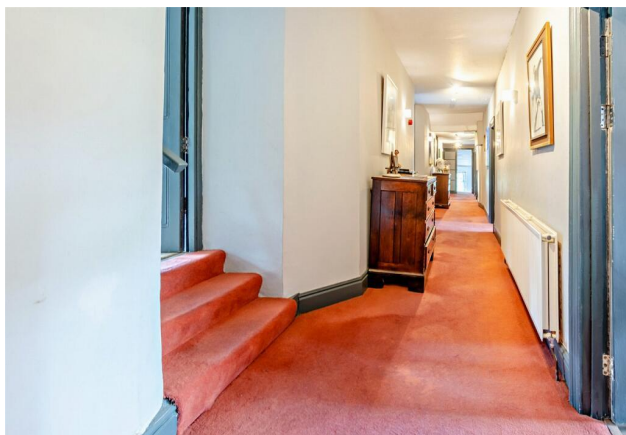




Kitchen



Castle and Hammet House



First Floor Landing



Bedroom



Bedroom En-Suite



Bedroom



Bedroom - Another View



En-Suite



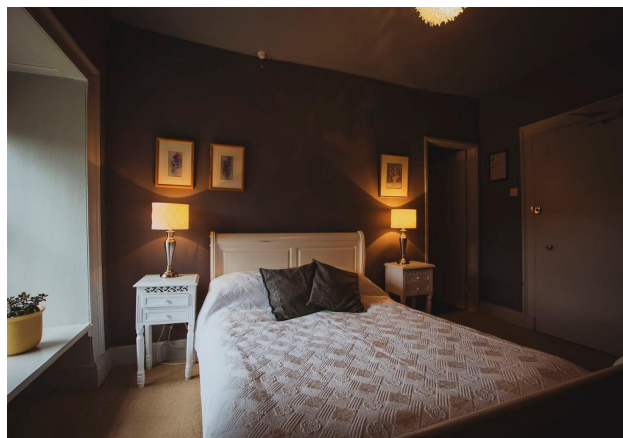
Bedroom



En-Suite



Bedroom



Bedroom



En-Suite



South Westerly View



Artist's Impression



Superb Communal Gardens



Superb Communal Gardens



Shared Drive to the 3 Units



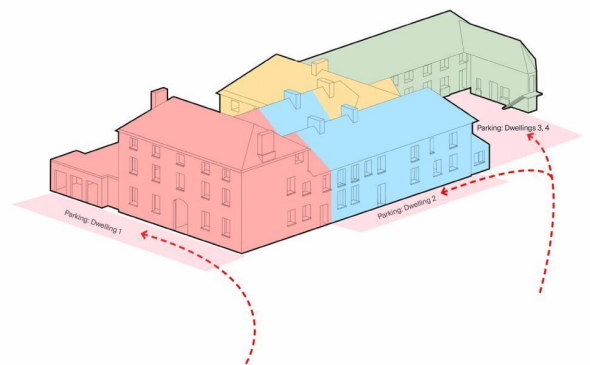
View of Whole House



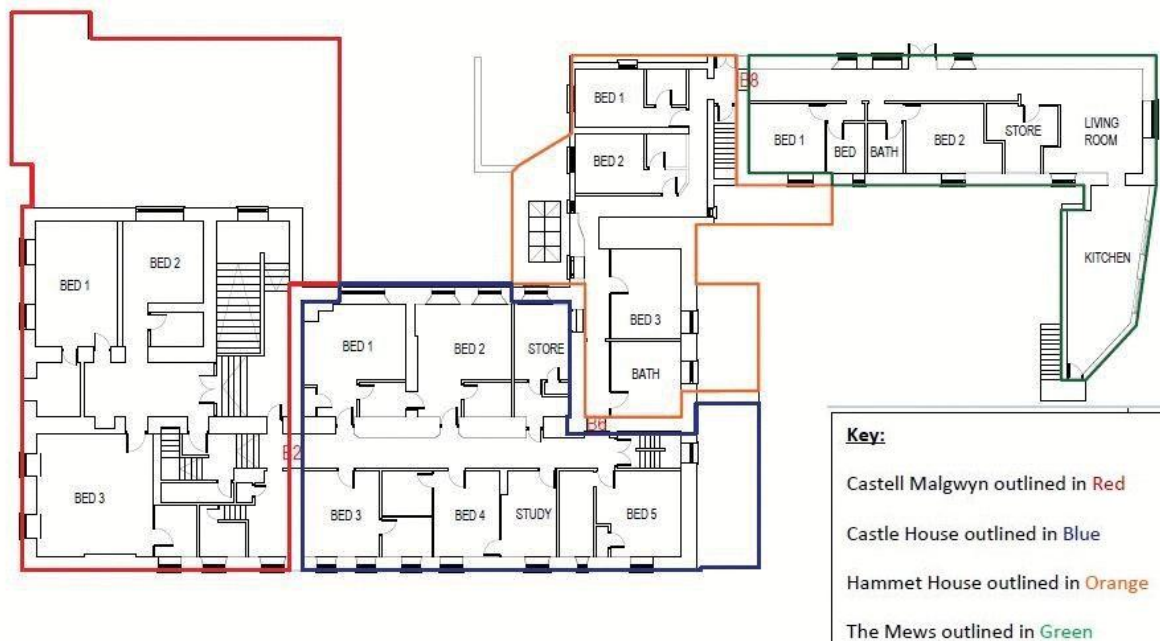
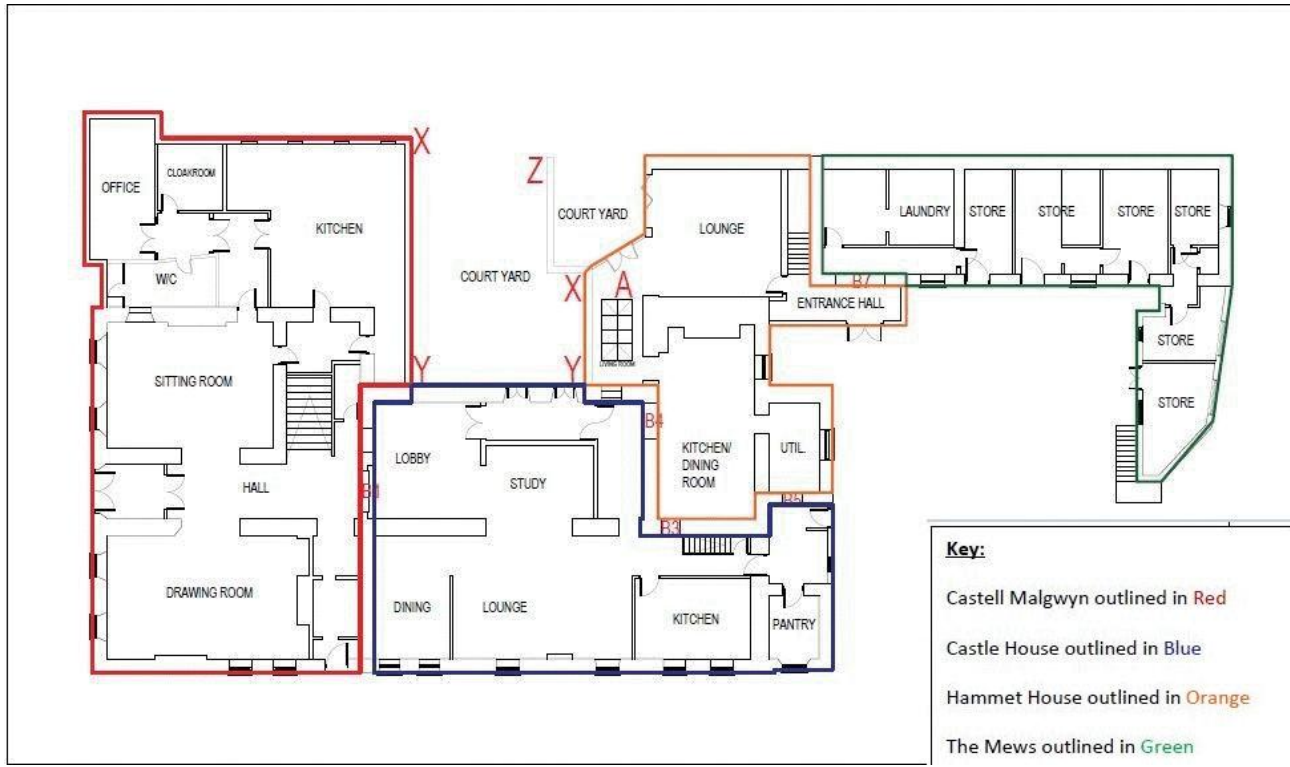
Outlook from Castle House

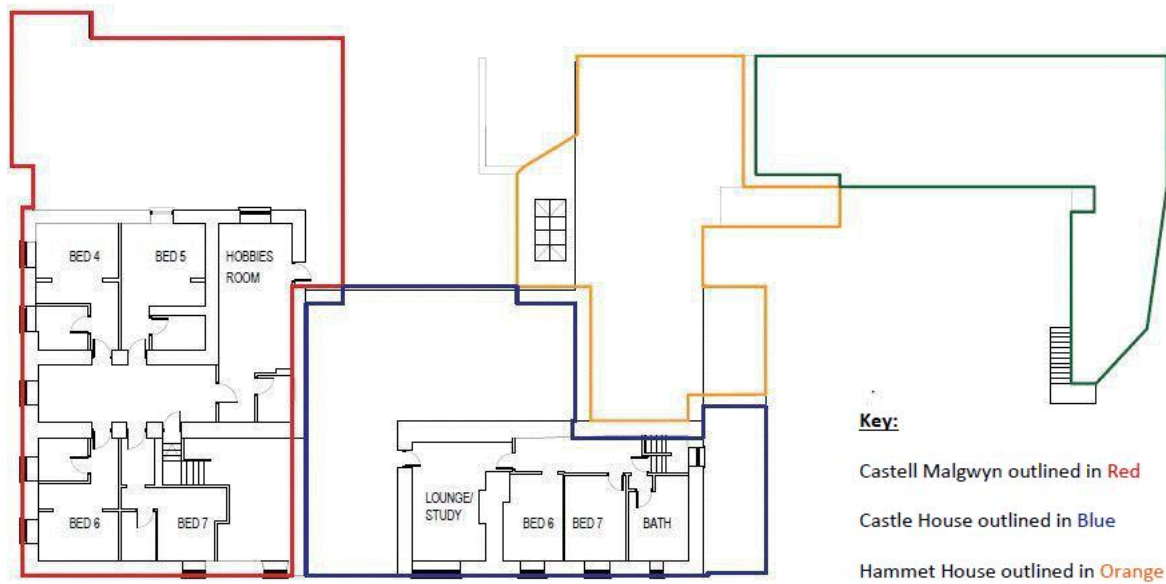


Private Garden Identification



Floorplans





Key:

Castell Malgwyn outlined in Red

Castle House outlined in Blue

Hammet House outlined in Orange

The Mews outlined in Green